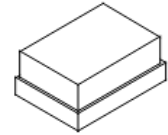


**SF2751K**

**1225 MHz  
SAW Filter**



SM1411-5

**MAXIMUM RATING:**

- Input Power Level: 10 dBm
- DC Voltage : 0V
- Operating Temperature: -40°C to +85°C
- Storage Temperature: -40°C to +105°C
- Moisture Sensitivity Level: Level 3(MSL3)
- ESD 50V(MM) 100V(HBM)

**ELECTRICAL CHARACTERISTICS:**

Item	Unit	Min	Type.	Max	Note
<b>Center Frequency</b> <b>Fc</b>	MHz	-	1225	-	
<b>Insertion Loss</b> (1195~1255 MHz) <b>IL</b>	dB		2.2	2.8	
<b>Group Delay Ripple</b> (1195~1255 MHz)	nS		10	20	
Attenuation					
880 ~ 920      MHz	dB	32	36		
1710 ~ 1850    MHz	dB	38	43		
1850 ~ 1920    MHz	dB	40	48		
1920 ~ 1980    MHz	dB	40	49		
2400 ~ 2500    MHz	dB	40	45		
Temperature coefficient	ppm/°C	-36			
Package size	mm	1411			

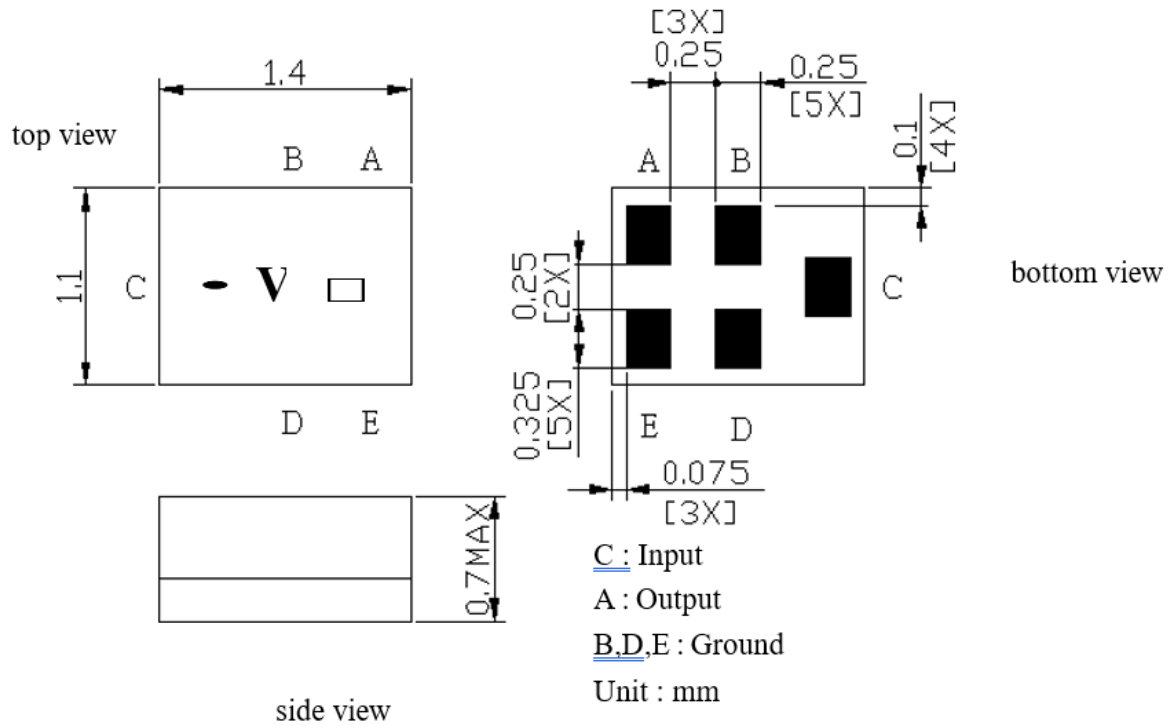


**CAUTION: Electrostatic Sensitive Device. Observe precautions for handling.**

**NOTES:**

1. The design, manufacturing process, and specifications of this device are subject to change.
2. US or International patents may apply.
3. This component was always RoHS compliant from the first date of manufacture.

**OUTLINE DRAWING:**

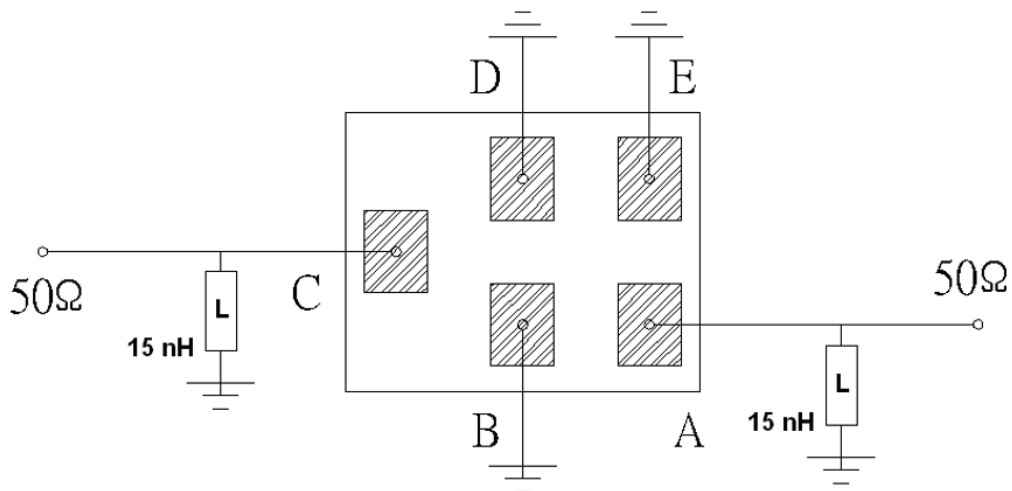


**Symbol:**

-V - assigned by manufacturer

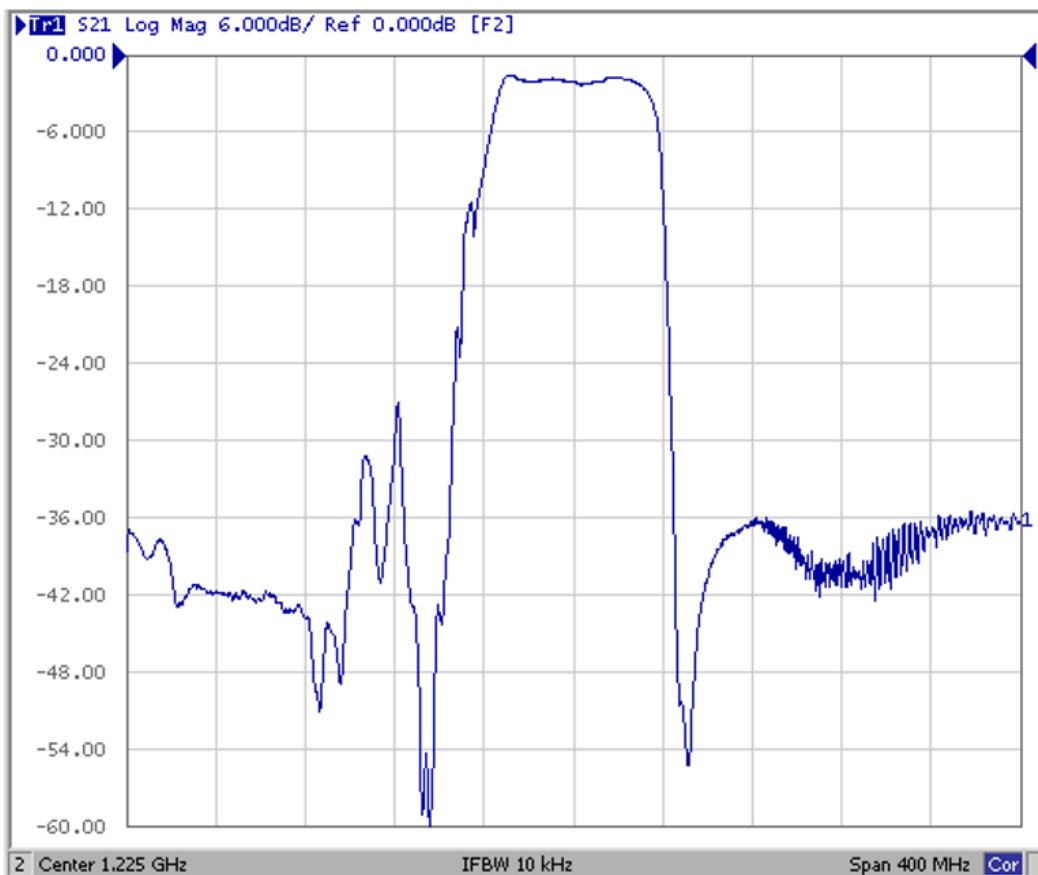
□ Year/Month code

**MEASUREMENT CIRCUIT:**

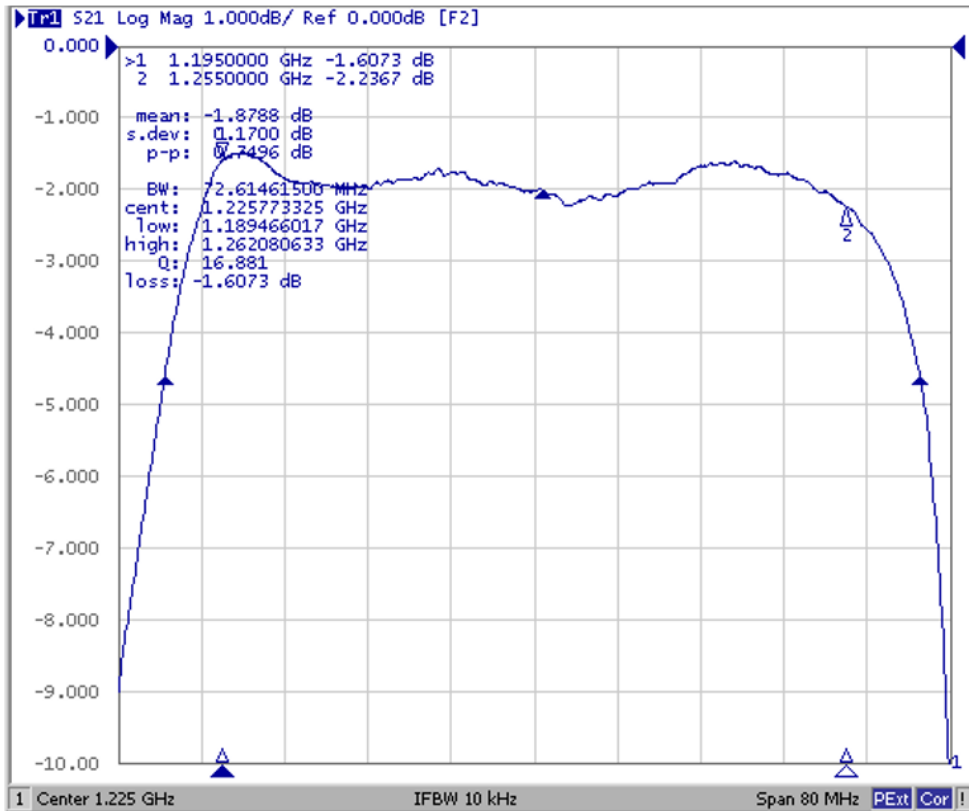


**Frequency Characteristics:**

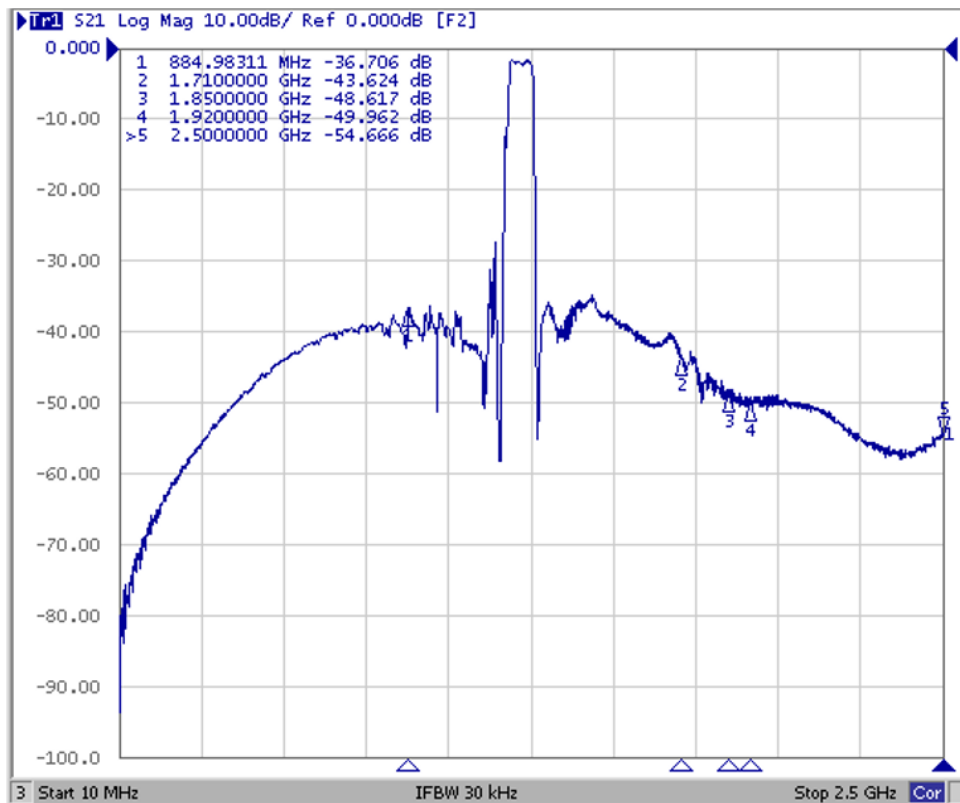
**Span 400 MHz**



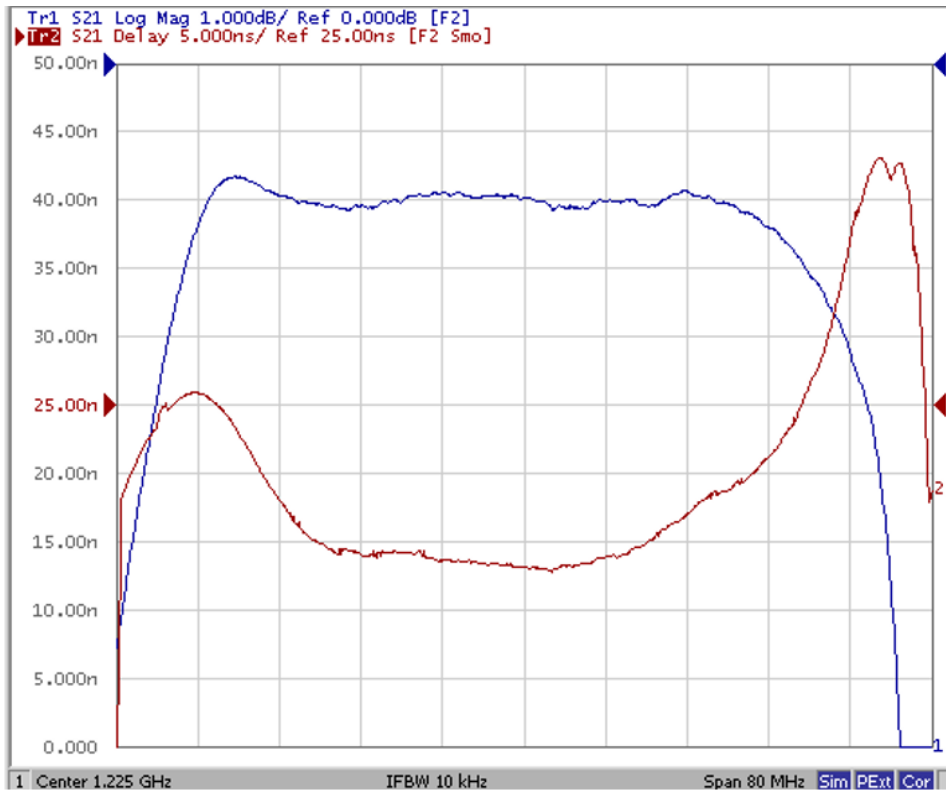
## Span 80 MHz



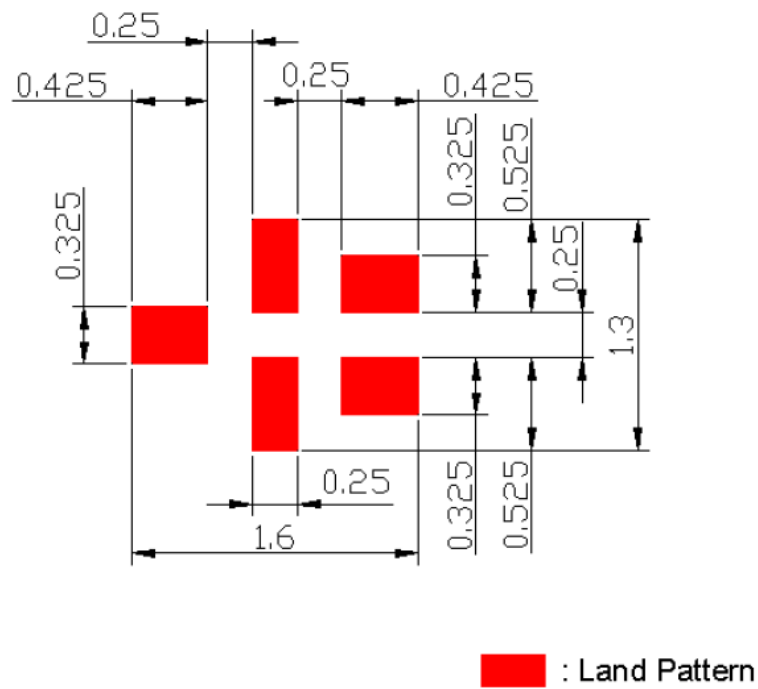
## S21 Wide



## Group Delay: (Span 80MHz)

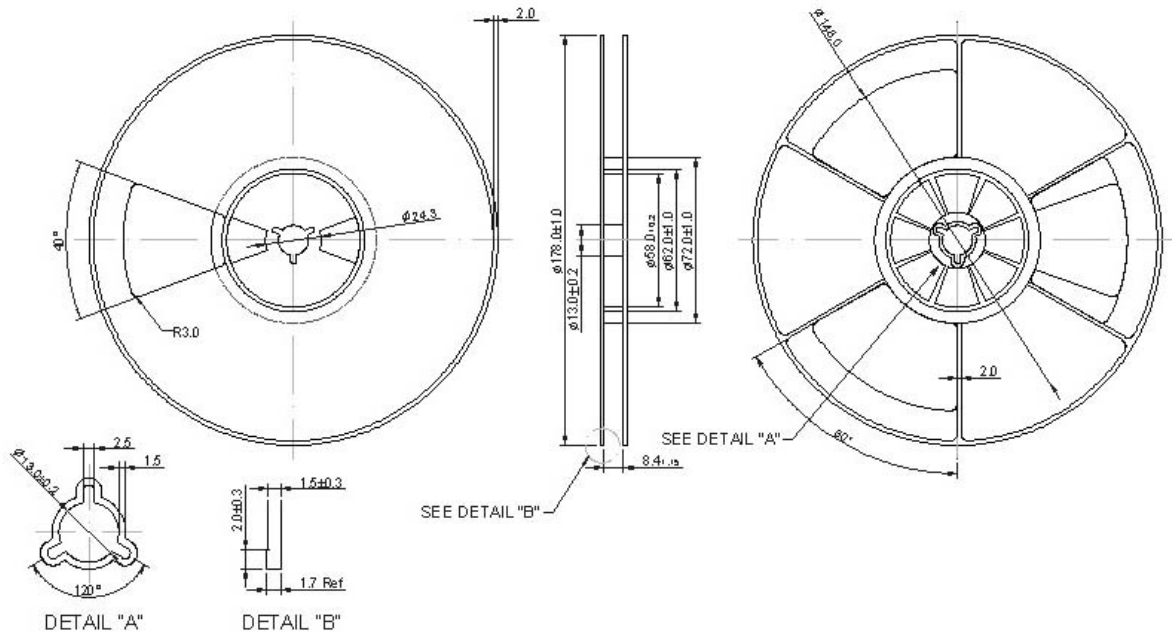


## PCB Footprint:

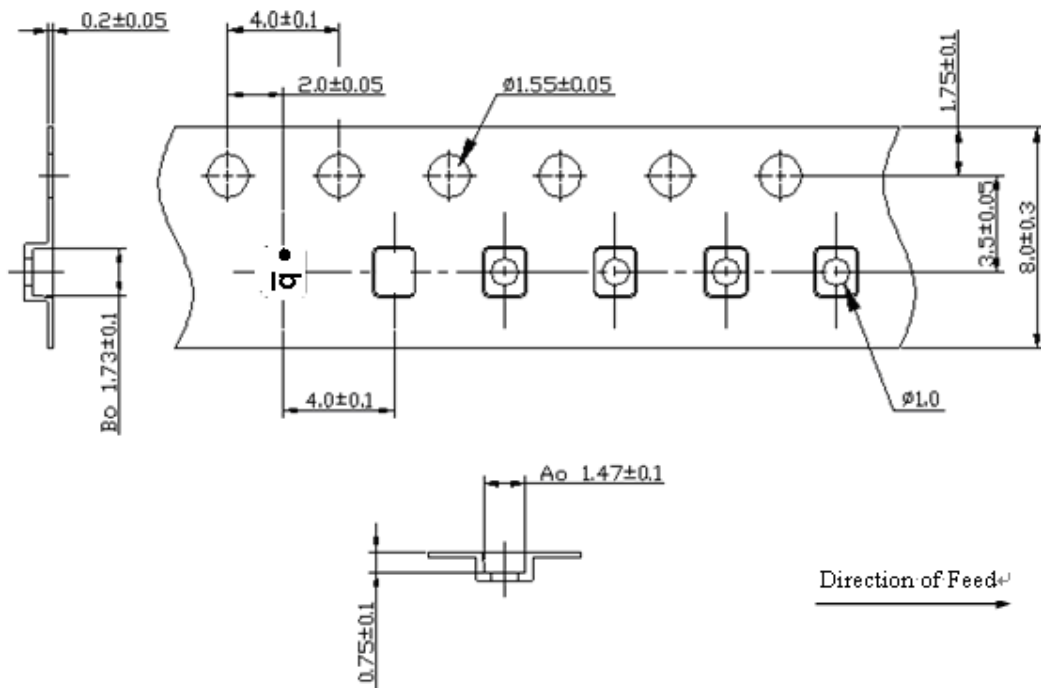


**PACKING:**  
**1. REEL DIMENSION**

7" Reel = 3000



**2. TAPE DIMENSION**



**Recommended Reflow Profile:**

1. Preheating shall be fixed at 150~180°C for 60~90 seconds.
2. Ascending time to preheating temperature 150°C shall be 30 seconds min.
3. Heating shall be fixed at 220°C for 50~80 seconds and at 260°C+0/-5°C peak (20~40sec).
4. Time: 2 times.

