

SM1411-5

MAXIMUM RATING:

- Input Power Level: 18 dBm
- DC Voltage : 6V
- Operating Temperature: -40°C to +85°C
- Storage Temperature: -40°C to +85°C
- Moisture Sensitivity Level: Level 3 (MSL3)

ELECTRICAL CHARACTERISTICS:

Terminating source/load impedance ($Z_S/Z_L = 50 \text{ Ohms}$)

Item	Unit	Min	Type.	Max	Note
Center Frequency F_c	MHz	-	866.5	-	
Insertion Loss (863 ~870 MHz) IL	dB		2.3	3.0	
Amplitude Ripple (863 ~ 870 MHz)	dB		0.3	1.3	
VSWR (863 ~ 870 MHz)			1.5	2.0	
Attenuation					
10 ~ 830 MHz	dB	45	50		
830 ~ 850 MHz	dB	35	40		
887 ~ 905 MHz	dB	30	35		
950 ~ 1500 MHz	dB	45	50		
1500 ~ 3000 MHz	dB	25	30		
Temperature coefficient	ppm/°C	-36			
Package size	mm	1411			

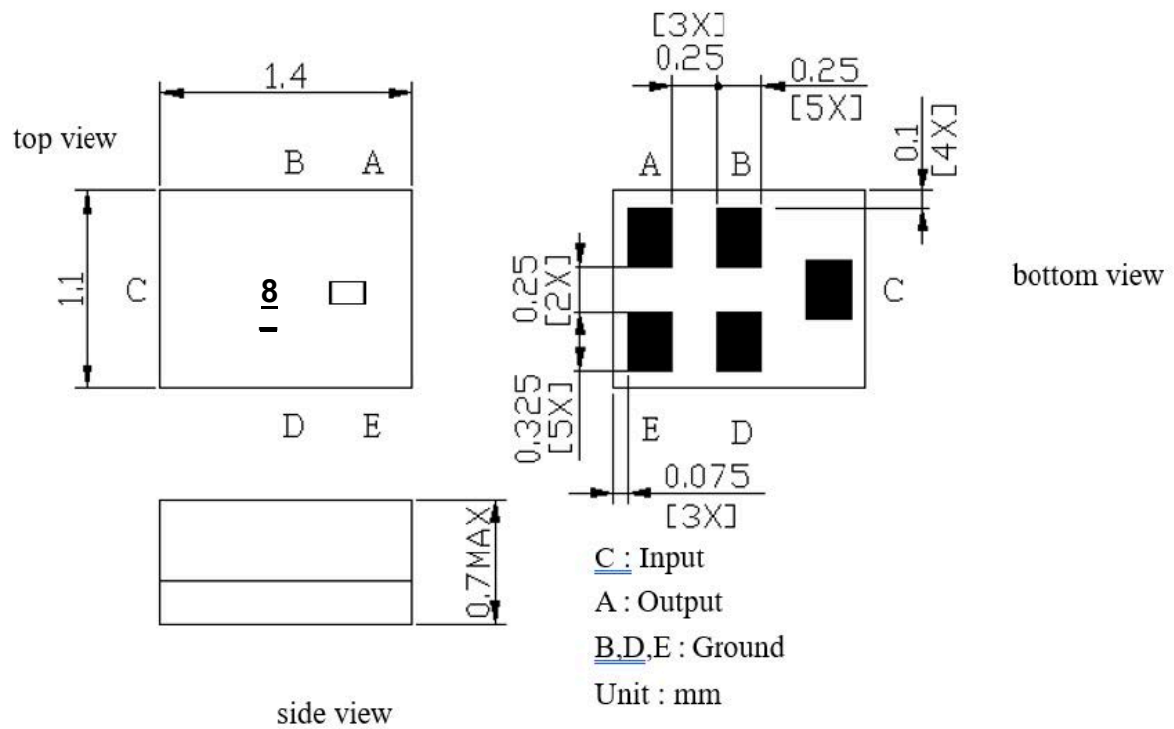


CAUTION: Electrostatic Sensitive Device. Observe precautions for handling.

NOTES:

1. The design, manufacturing process, and specifications of this device are subject to change.
2. US or International patents may apply.
3. This component was always RoHS compliant from the first date of manufacture.

OUTLINE DRAWING:

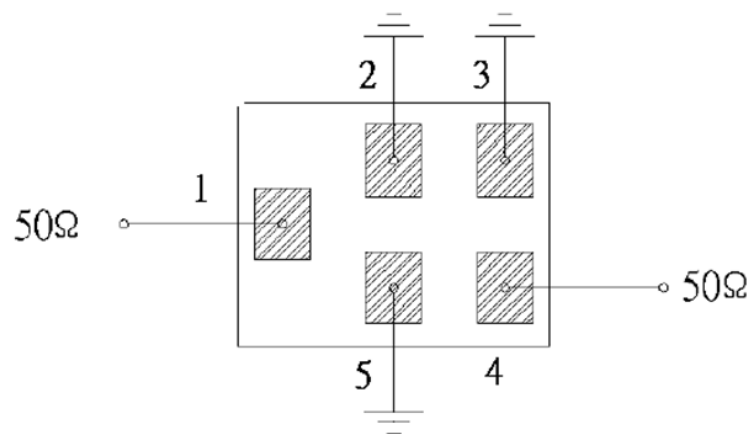


Symbol:

8 - assigned by manufacturer

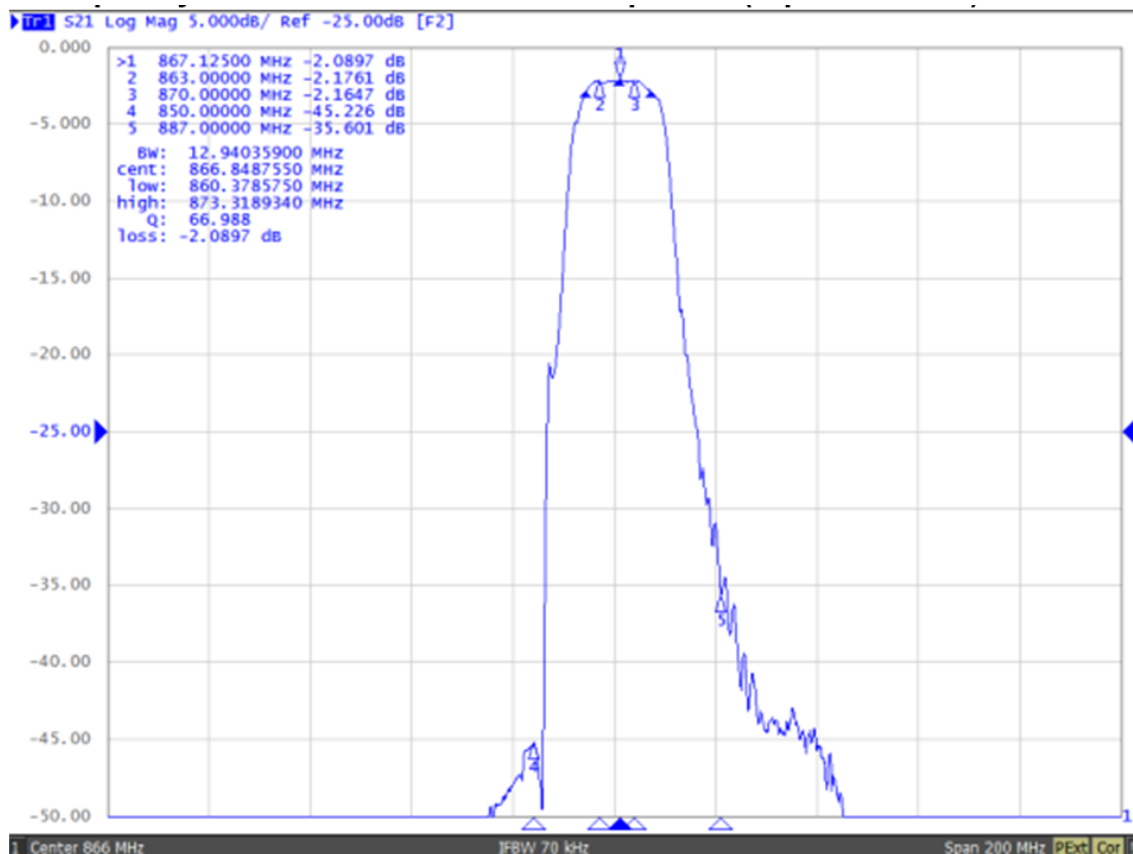
□ Year/Month code

MEASUREMENT CIRCUIT:

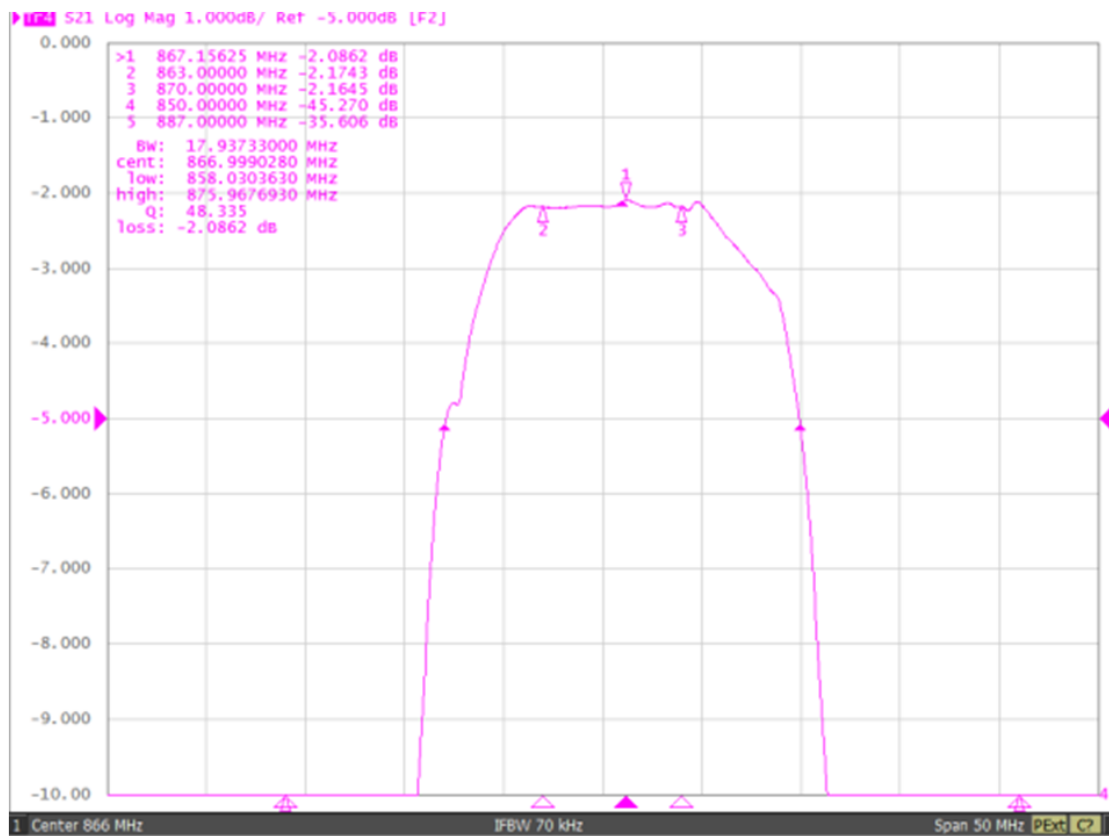


Frequency Characteristics:

Span 200 MHz



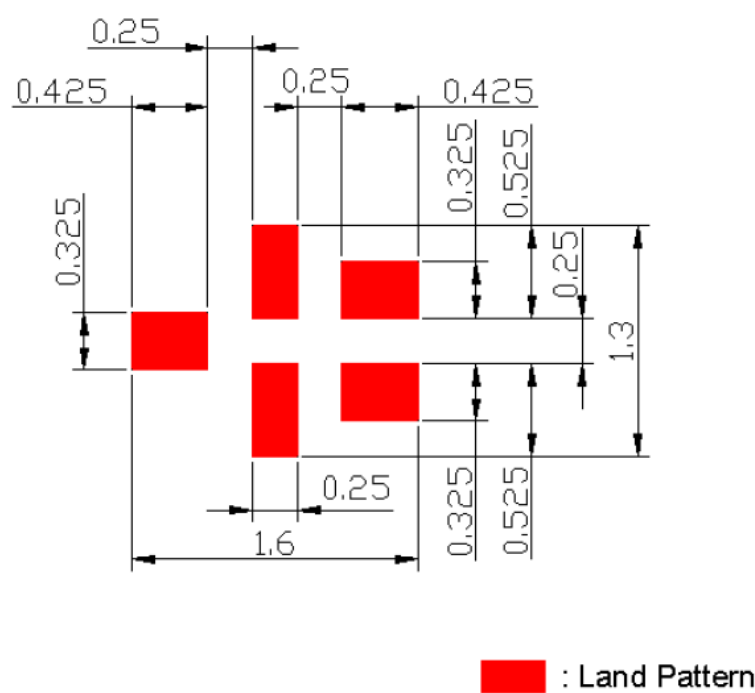
Span 50 MHz



S21 Wide



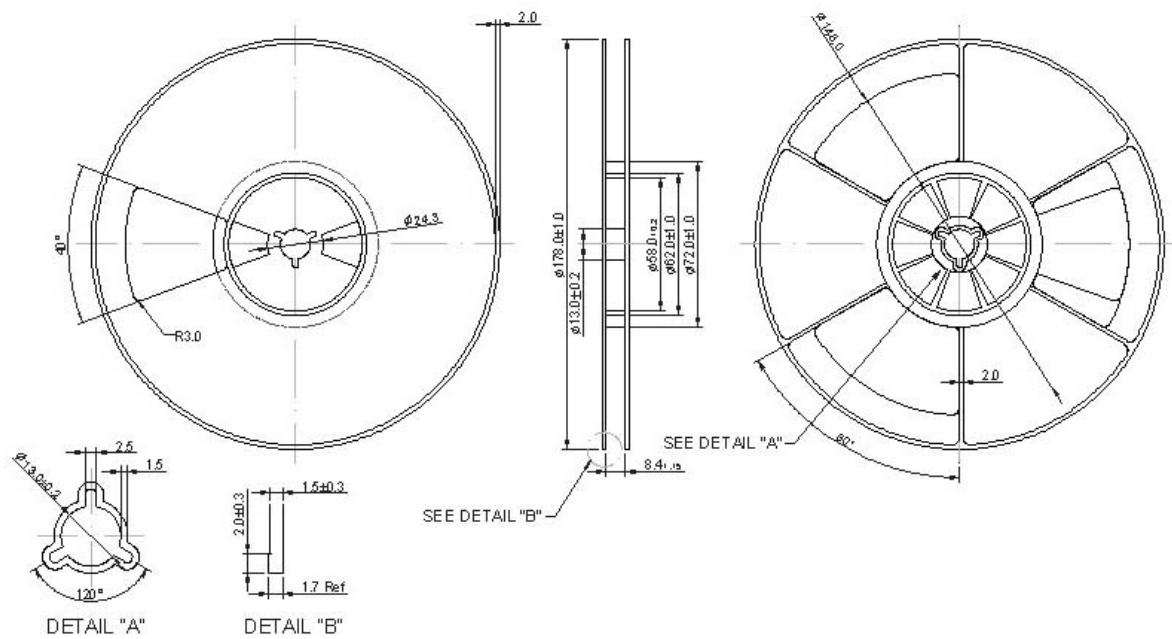
PCB Footprint:



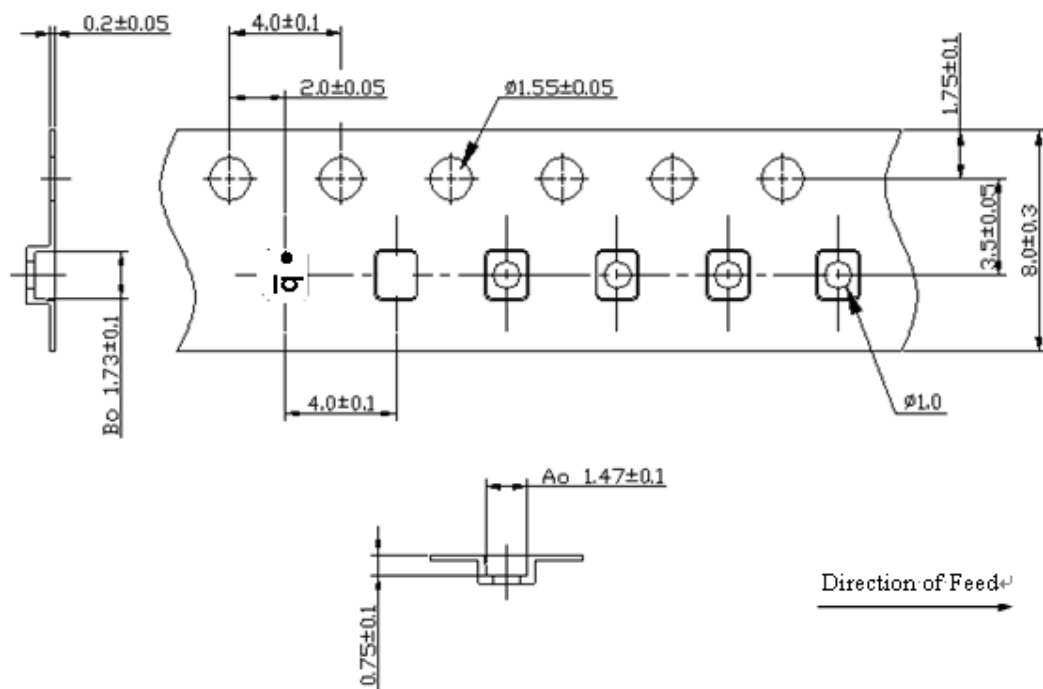
PACKING:

1. REEL DIMENSION

7" Reel = 3000



2. TAPE DIMENSION



Recommended Reflow Profile:

1. Preheating shall be fixed at 150~180°C for 60~90 seconds.
2. Ascending time to preheating temperature 150°C shall be 30 seconds min.
3. Heating shall be fixed at 220°C for 50~80 seconds and at 260°C+0/-5°C peak (20~40sec).
4. Time: 2 times.

