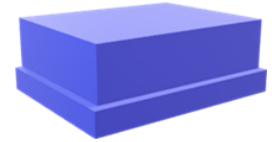


**SF2768L**

**634.5 MHz  
SAW Filter**



SM1109-5

**MAXIMUM RATING:**

- Maximum Input Power: 15 dBm
- DC voltage: 3 V
- Operating Temperature: -30°C to +85°C
- Storage Temperature: -40°C to +85°C
- Moisture Sensitive Level: Level 3
- Band 71

**ELECTRICAL CHARACTERISTICS:**

Item	Specification					Note
	Frequency Range(MHz)	Unit	Min	Typ*	Max	
<b>Insertion Loss(#)</b>	617.34 - 651.66 MHz	dB		1.5	2.2	
<b>Amplitude Ripple</b>	617.34 - 651.66 MHz	dB <sub>p-p</sub>		1	1.5	
<b>VSWR</b>	617.34 - 651.66 MHz			1.7	2.2	
<b>Attenuation</b>	10 - 608 MHz	dB	5	15		
	35 - 55 MHz	dB	50	55		
	10 - 550 MHz	dB	30	34		
	663 - 698 MHz	dB	35	40		
	709 - 740 MHz	dB	20	30		
	793 - 805 MHz	dB	20	28		
	816 - 818 MHz	dB	20	25		
	1058 - 1138 MHz	dB	25	33		
	1163 - 1204 MHz	dB	30	35		
	1233 - 1281 MHz	dB	30	37		
	1461 - 1484 MHz	dB	34	45		
	1653- 1698 MHz	dB	25	50		
	1710 - 1755 MHz	dB	20	50		
	1850 - 1956 MHz	dB	35	50		
	2305 - 2315 MHz	dB	35	50		
	2327 - 2407 MHz	dB	35	50		
2400 - 2500 MHz	dB	35	50			
2468 - 2608 MHz	dB	35	50			
2922 - 2967 MHz	dB	35	50			
4900 - 5950 MHz	dB	35	50			
Package size	mm		1.1 x 0.9			

\*Typical value at 25±2deg.C  
(#)PCB loss is de-embedded



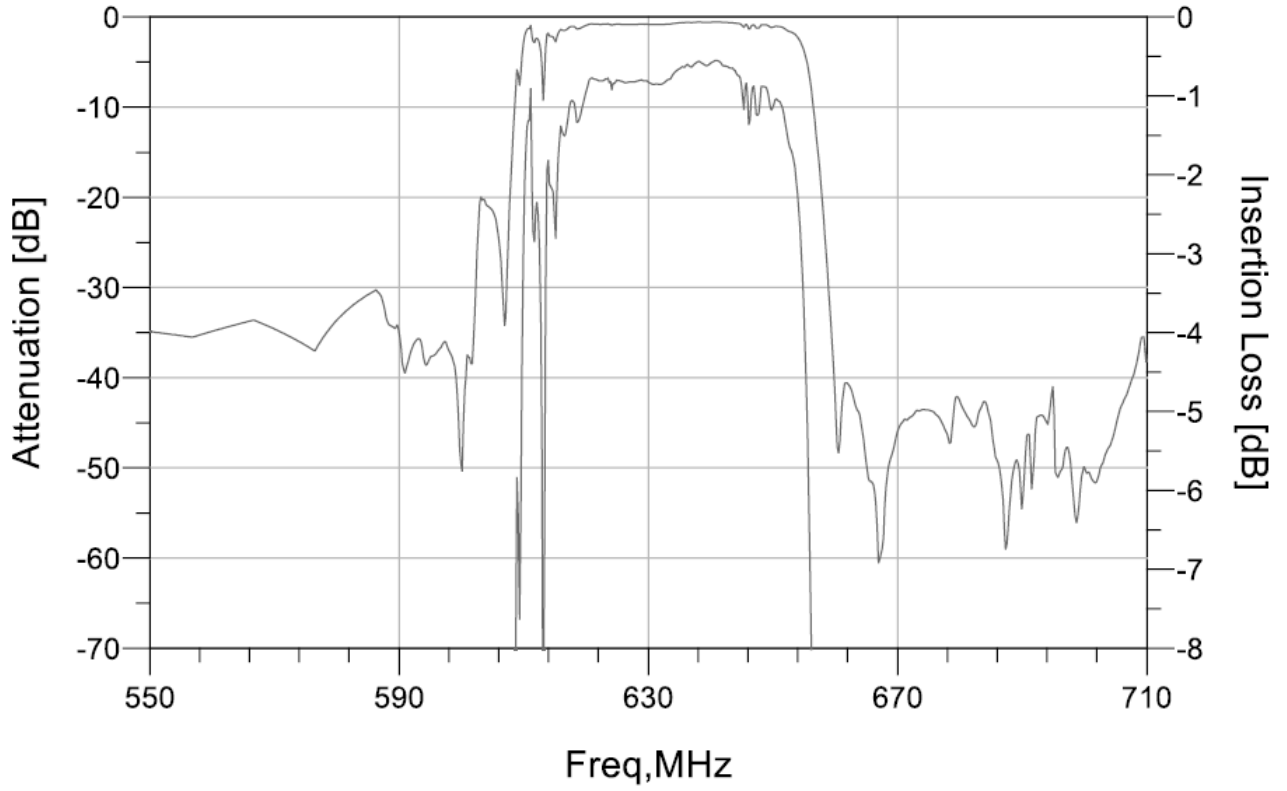
**CAUTION: Electrostatic Sensitive Device. Observe precautions for handling.**

**NOTES:**

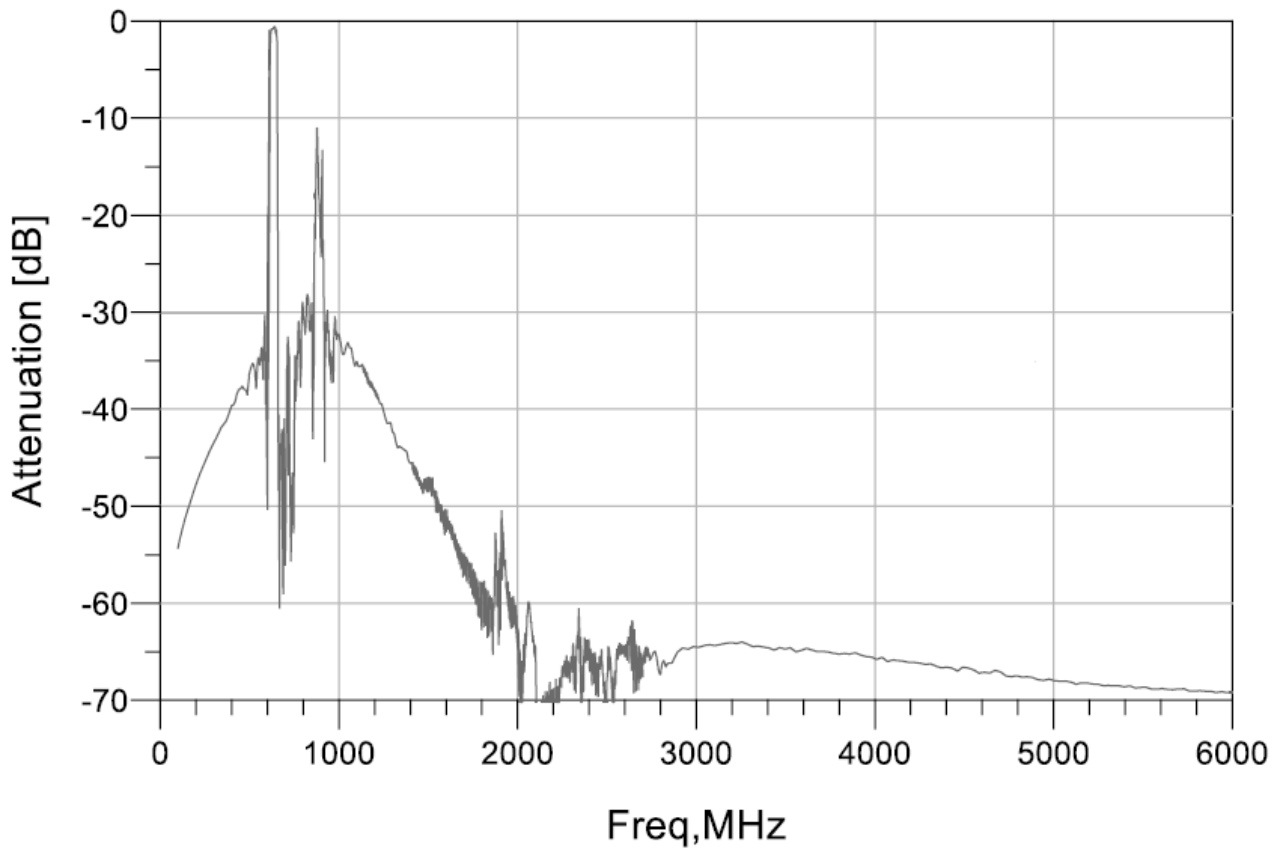
1. The design, manufacturing process, and specifications of this device are subject to change.
2. US or International patents may apply.
3. RoHS compliant from the first date of manufacture.

# Frequency Characteristics :

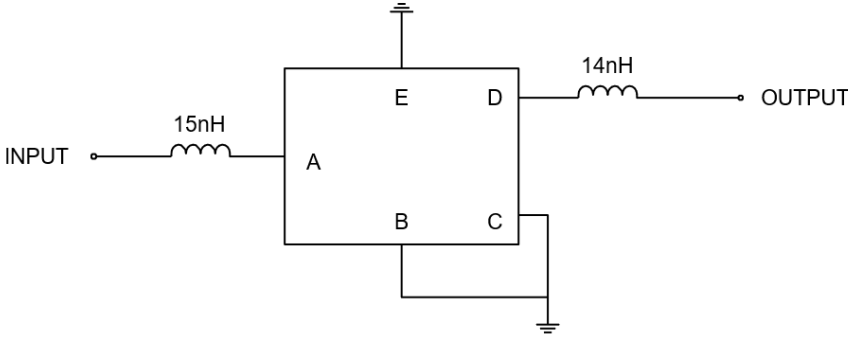
## S21 Span



## S21 Span 200 MHz

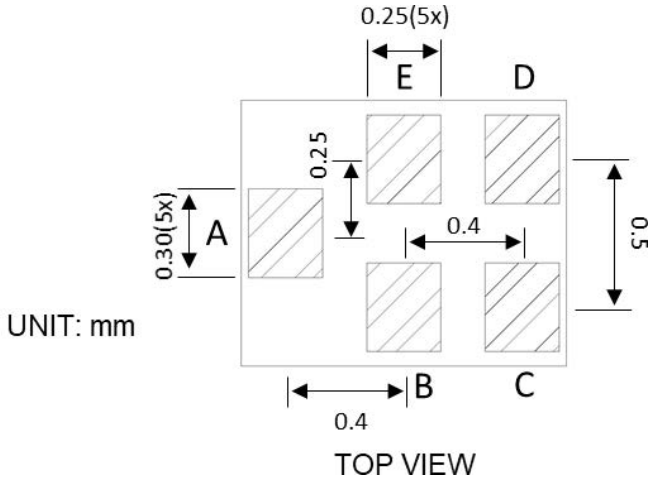


**MEASUREMENT CIRCUIT:**

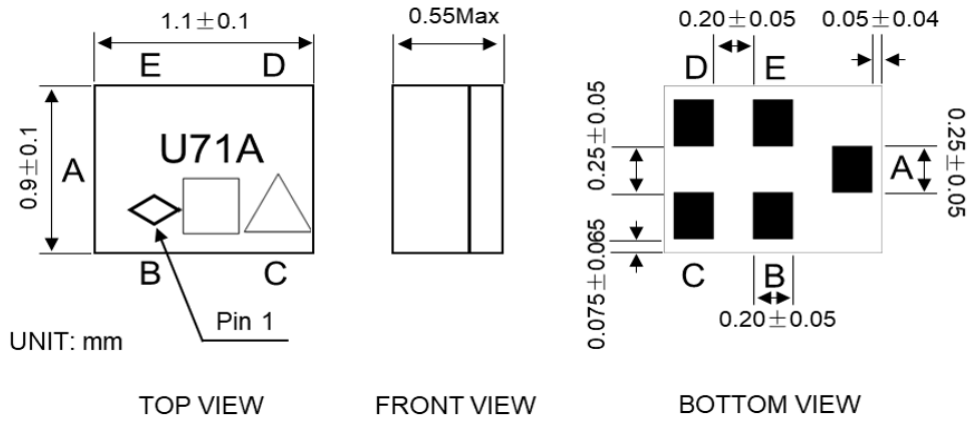


Source & Load Impedance: 50 Ω

**LAND PATTERN:**



**OUTLINE DRAWING:**



TOP VIEW

FRONT VIEW

BOTTOM VIEW

Marking Descriptions	
□	Code for date
△	Code for month and year

Pin Description	
B, C, E	Ground
A	Input
D	Output

**Marking code**

<b>Day</b>	<b>1st</b>	<b>2nd</b>	<b>3rd</b>	<b>4th</b>	<b>5th</b>	<b>6th</b>	<b>7th</b>	<b>8th</b>	<b>9th</b>	<b>10th</b>	
<b>Code</b>	<b>A</b>	<b>B</b>	<b>C</b>	<b>D</b>	<b>E</b>	<b>F</b>	<b>G</b>	<b>H</b>	<b>J</b>	<b>K</b>	
<b>Day</b>	<b>11th</b>	<b>12th</b>	<b>13th</b>	<b>14th</b>	<b>15th</b>	<b>16th</b>	<b>17th</b>	<b>18th</b>	<b>19th</b>	<b>20<sup>th</sup></b>	
<b>Code</b>	<b>L</b>	<b>M</b>	<b>N</b>	<b>P</b>	<b>Q</b>	<b>R</b>	<b>S</b>	<b>T</b>	<b>U</b>	<b>V</b>	
<b>Day</b>	<b>21th</b>	<b>22th</b>	<b>23th</b>	<b>24th</b>	<b>25th</b>	<b>26th</b>	<b>27th</b>	<b>28th</b>	<b>29th</b>	<b>30th</b>	<b>31th</b>
<b>Code</b>	<b>W</b>	<b>X</b>	<b>Y</b>	<b>Z</b>	<b>a</b>	<b>b</b>	<b>h</b>	<b>d</b>	<b>e</b>	<b>f</b>	<b>g</b>

	<b>Jan</b>	<b>Feb</b>	<b>Mar</b>	<b>Apr</b>	<b>May</b>	<b>Jun</b>	<b>Jul</b>	<b>Aug</b>	<b>Sep</b>	<b>Oct</b>	<b>Nov</b>	<b>Dec</b>
<b>2022</b>	<b>A</b>	<b>B</b>	<b>C</b>	<b>D</b>	<b>E</b>	<b>F</b>	<b>G</b>	<b>H</b>	<b>J</b>	<b>K</b>	<b>L</b>	<b>M</b>
<b>2023</b>	<b>N</b>	<b>P</b>	<b>Q</b>	<b>R</b>	<b>S</b>	<b>T</b>	<b>U</b>	<b>V</b>	<b>W</b>	<b>X</b>	<b>Y</b>	<b>Z</b>
<b>2024</b>	<b>a</b>	<b>b</b>	<b>i</b>	<b>d</b>	<b>e</b>	<b>f</b>	<b>g</b>	<b>h</b>	<b>j</b>	<b>0</b>	<b>1</b>	<b>m</b>
<b>2025</b>	<b>n</b>	<b>2</b>	<b>3</b>	<b>4</b>	<b>5</b>	<b>6</b>	<b>7</b>	<b>8</b>	<b>9</b>	<b>q</b>	<b>r</b>	<b>t</b>



## RECOMMENDED REFLOW PROFILE :

1. Preheating shall be fixed at 150~180°C for 60~90 seconds.
2. Ascending time to preheating temperature 150°C shall be 30 seconds min.
3. Heating shall be fixed at 220°C for 50~80 seconds and at 260°C +0/-5°C peak (20~40sec).
4. Time: 2 times.

